



# North Florida Chapter of the National Utility Contractors Association

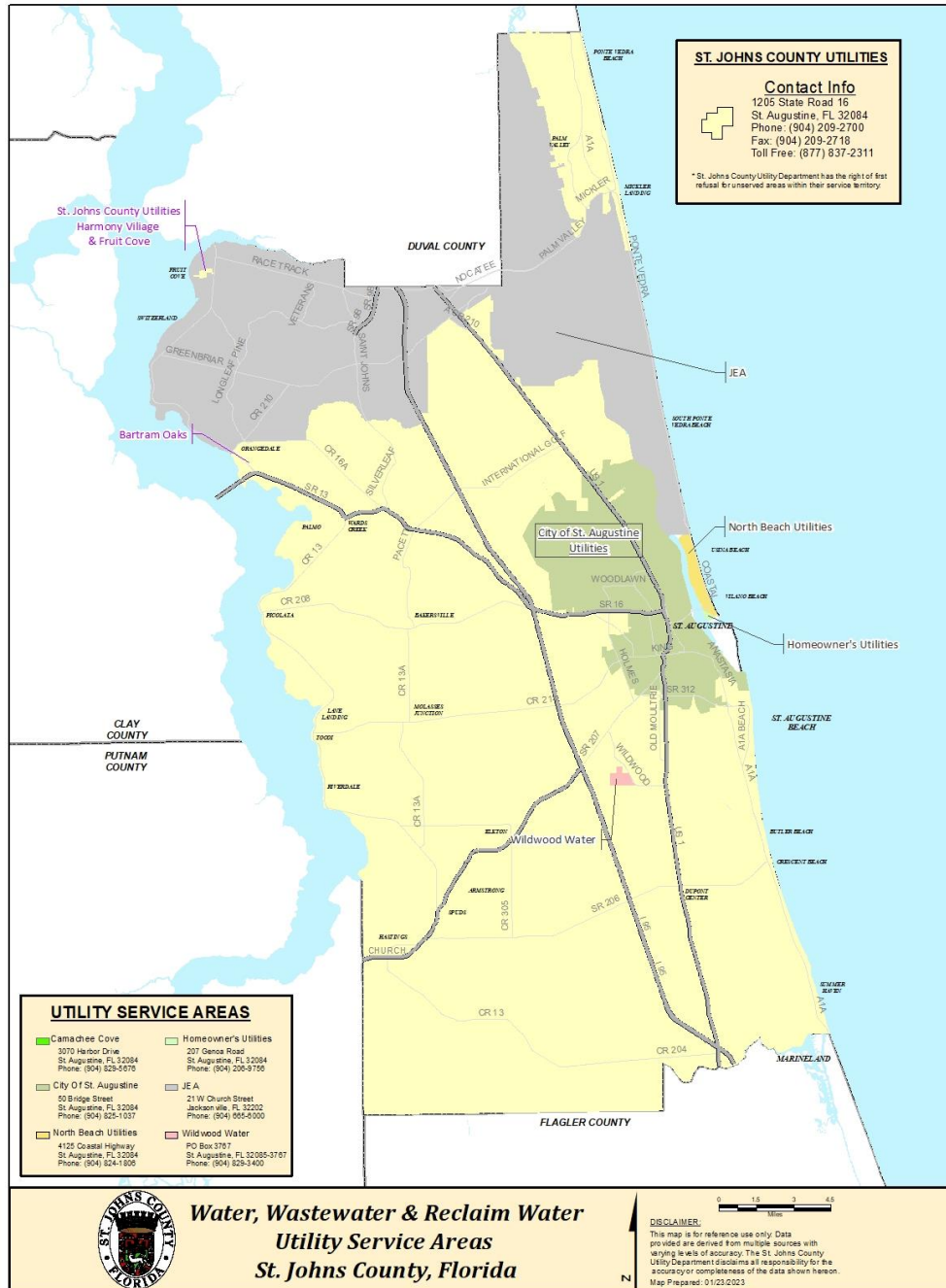
Scott Trigg, P.E. – Chief Engineer of Capital Projects  
Gordon Smith, P.E. – Assistant Utility Director

August 17, 2023



# Agenda

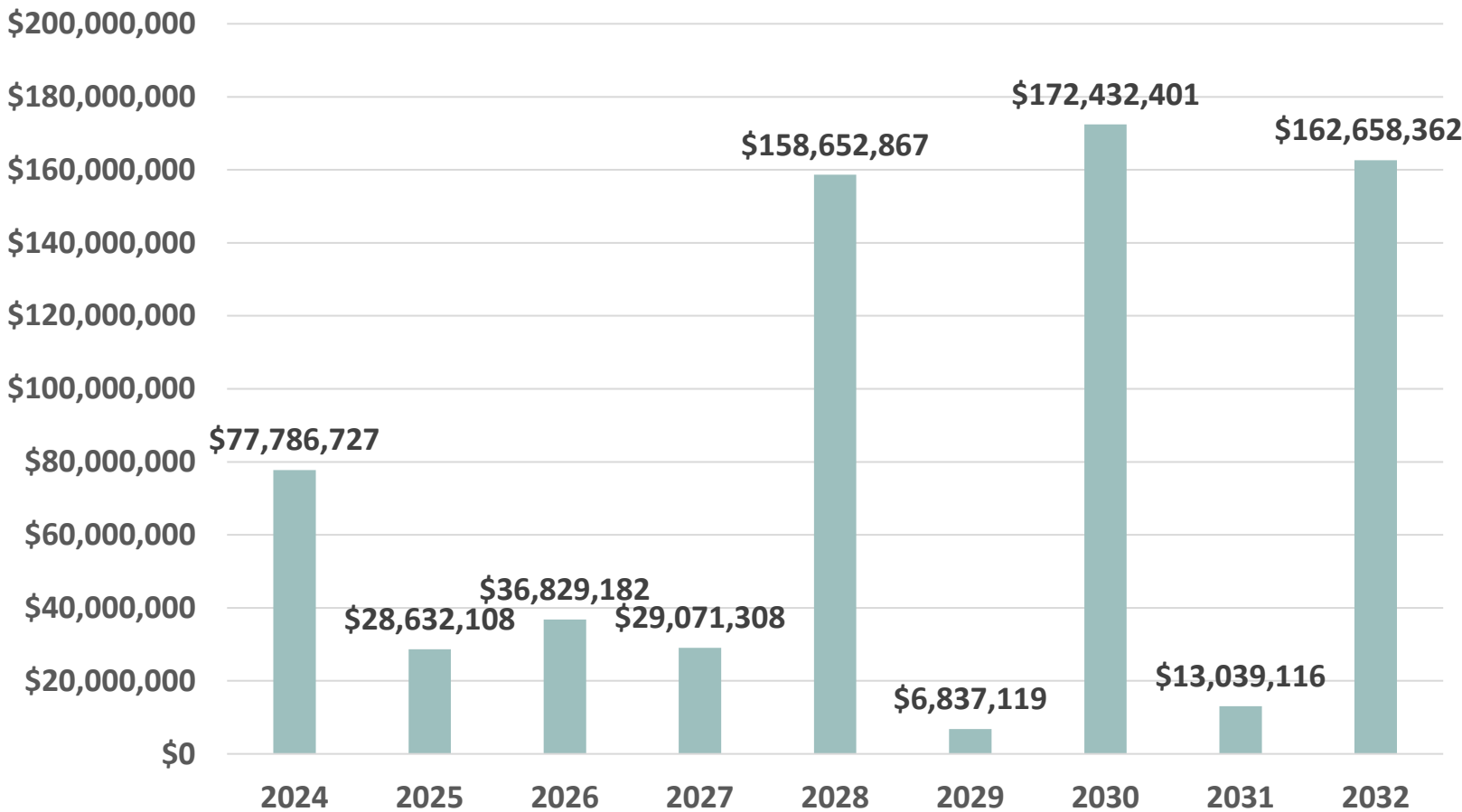
- St. Johns County Utility Profile
- Overview of Fiscal Year (FY) 2024-2032 CIP Program
- Identify project related funding sources and infrastructure categories
- Discuss current projects for FY 2023
- Questions



# St. Johns County Utility Profile

- Provides water, wastewater, and reclaimed water services to over 125,000 customers
- 8 Water Treatment Plants
  - 31 MGD infrastructure capacity
  - 13 MGD AADF currently produced
- 8 Wastewater Treatment Plants
  - 13.2 MGD infrastructure capacity
  - 8.5 MGD AADF currently treated
  - Approximately 51 % reclaimed water utilization
- 520+ Lift Stations

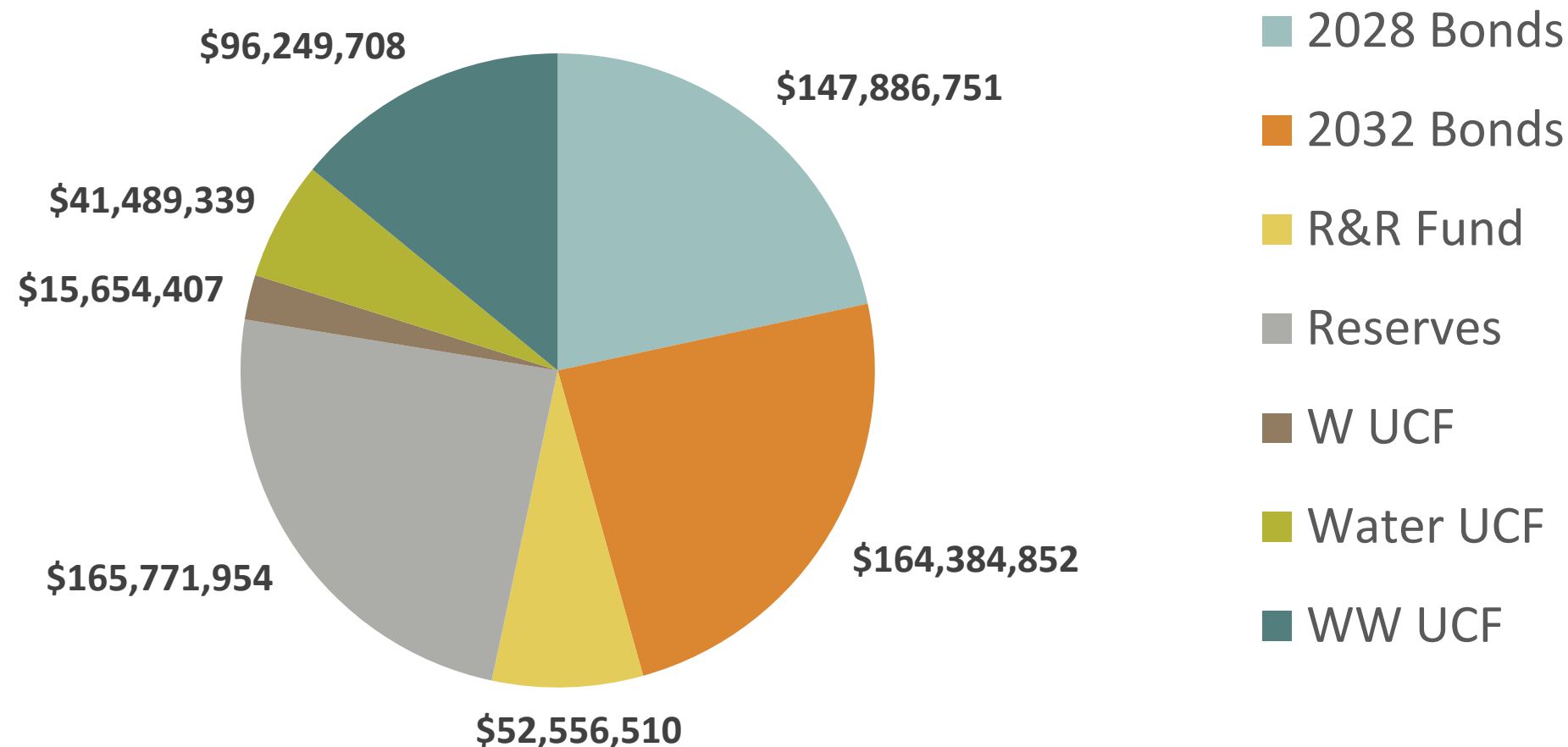
# Capital Improvement Program (2024-2032)



Year	CIP Budget	
2024	\$	77,786,727
2025	\$	28,632,108
2026	\$	36,829,182
2027	\$	29,071,308
2028	\$	158,652,867
2029	\$	6,837,119
2030	\$	172,432,401
2031	\$	13,039,116
2032	\$	162,658,362
Grand Total	\$	685,939,191



# Capital Improvement Program (2024-2032) Funding Sources





# 2028 Bond Issuance Projects

- NW WRF Expansion from 3.75 to 7.5 MGD
- AI WWTF Process and Reclaimed Improvements (SB64)
- Marsh Landing WWTF Expansion or Rehabilitation
- Silverleaf West WTP and wells (3 MGD+)
- Hastings WRF 0.5 MGD

# 2032 Major Bond Issuance Projects

- New NE WRF (3 MGD+)
- 207 WRF Expansion from 3.25 to 6.5 MGD
- AI WWTF Reclaimed Water Supply
- Reclaimed Water Master Grid System

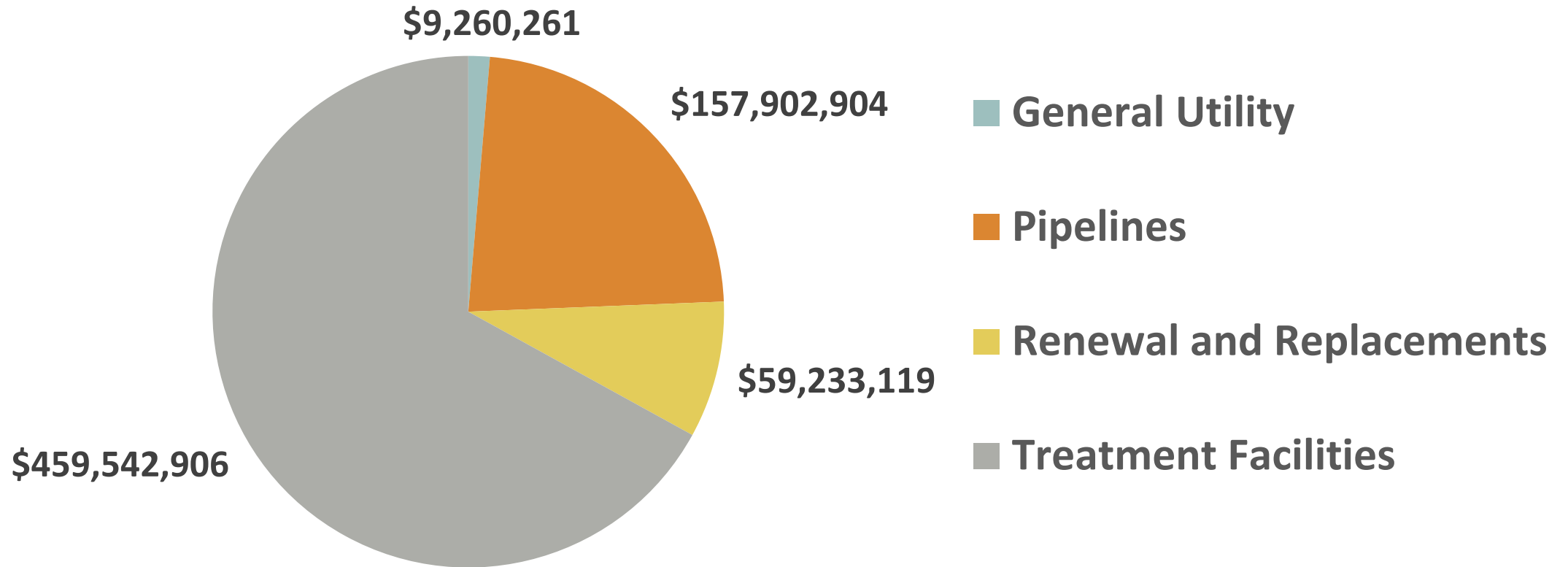
# Upcoming Major 2024 Projects

- DS 1 FM pipeline to PC WRF
- Hastings WM pipeline
- SR16 RWM pipeline
- Water Plant Road WM pipeline
- CR214 to SR207 concentrate FM
- A1A Master PS
- Silverleaf FM, RWM pipelines
- NW WRF 3 MG Reclaimed GST and pump station



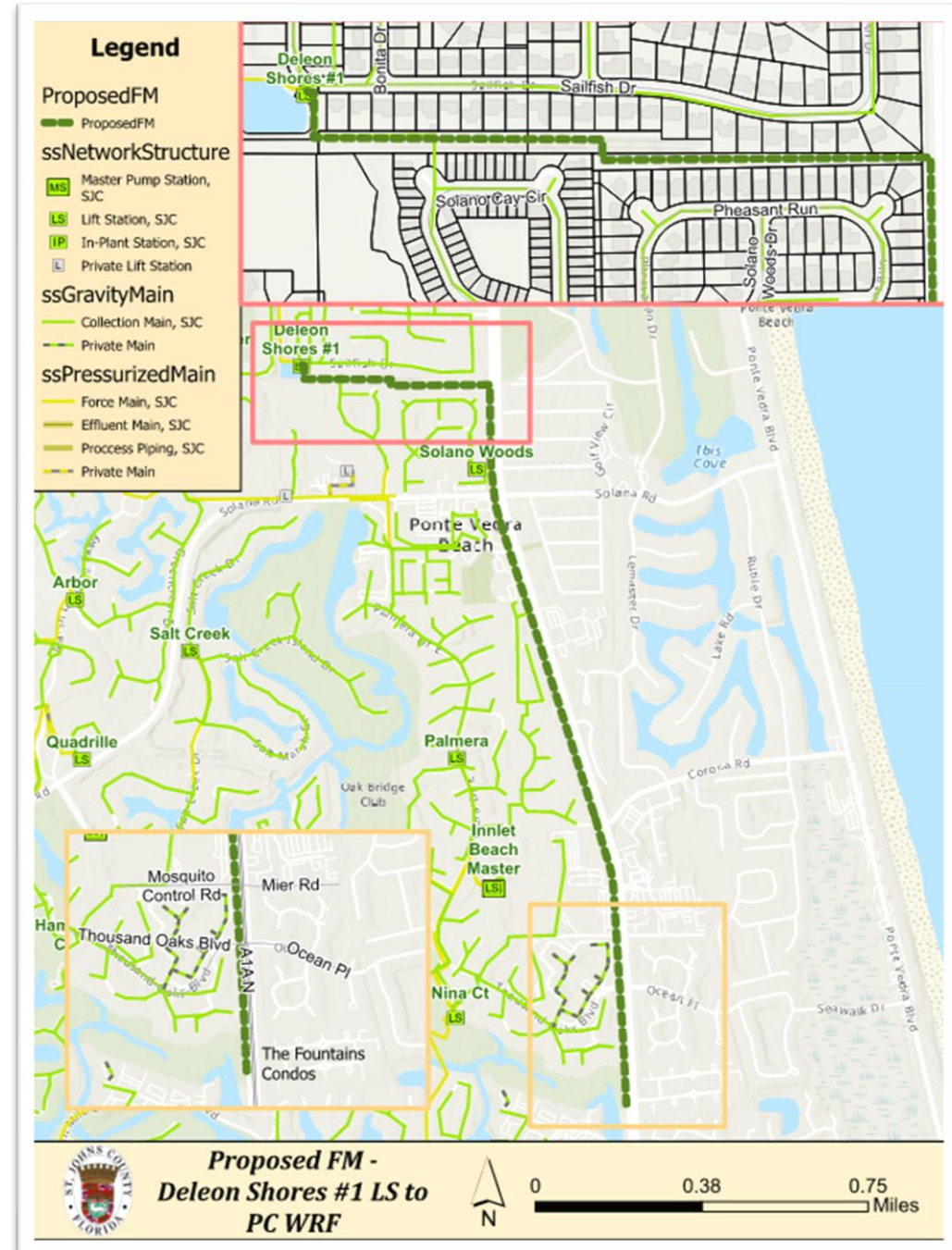
# Capital Improvement Program (2024-2032)

## Infrastructure Types



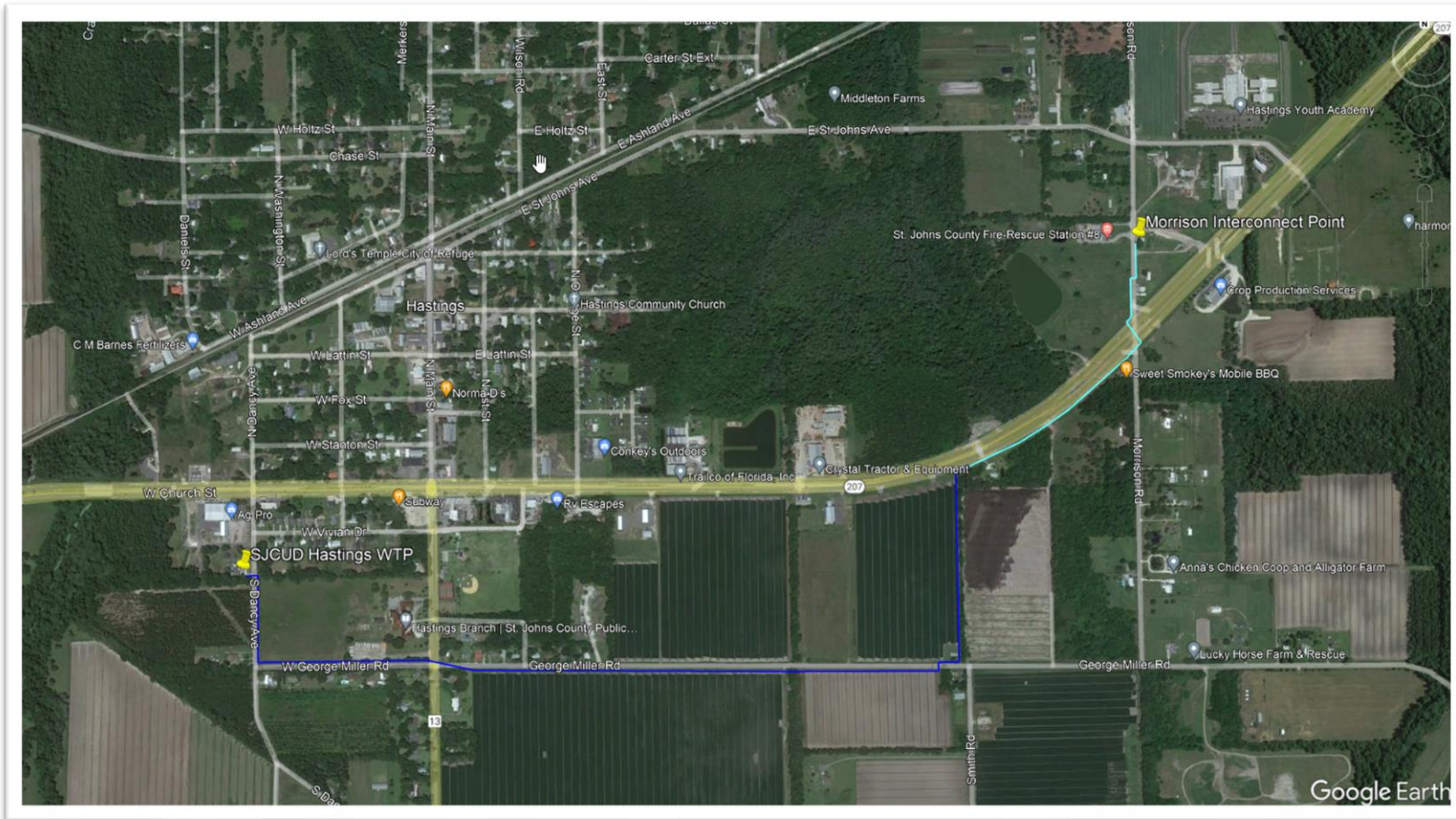
# DeLeon Shores #1 LS Re-Route to Players Club

- Ponte Vedra, FL - Highway A1A
- ± 11,200-LF of 10-inch PVC or 12-inch HDPE
- Open cut and trenchless crossings
- Currently in survey and design
- Estimated bid date: Spring 2024.
- Budget Estimate: \$3.5M



# Hastings Water Main SR 207 Interconnect

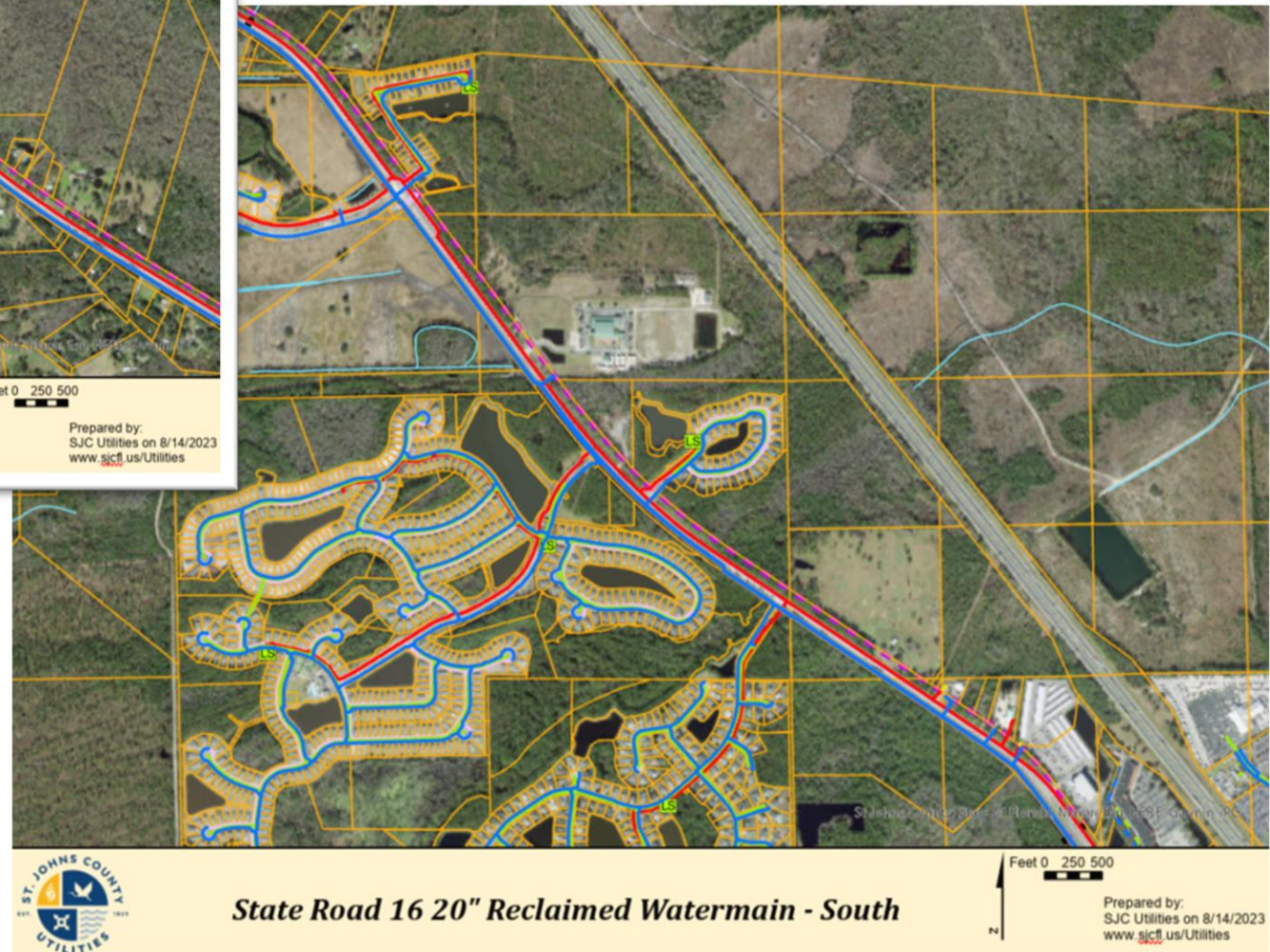
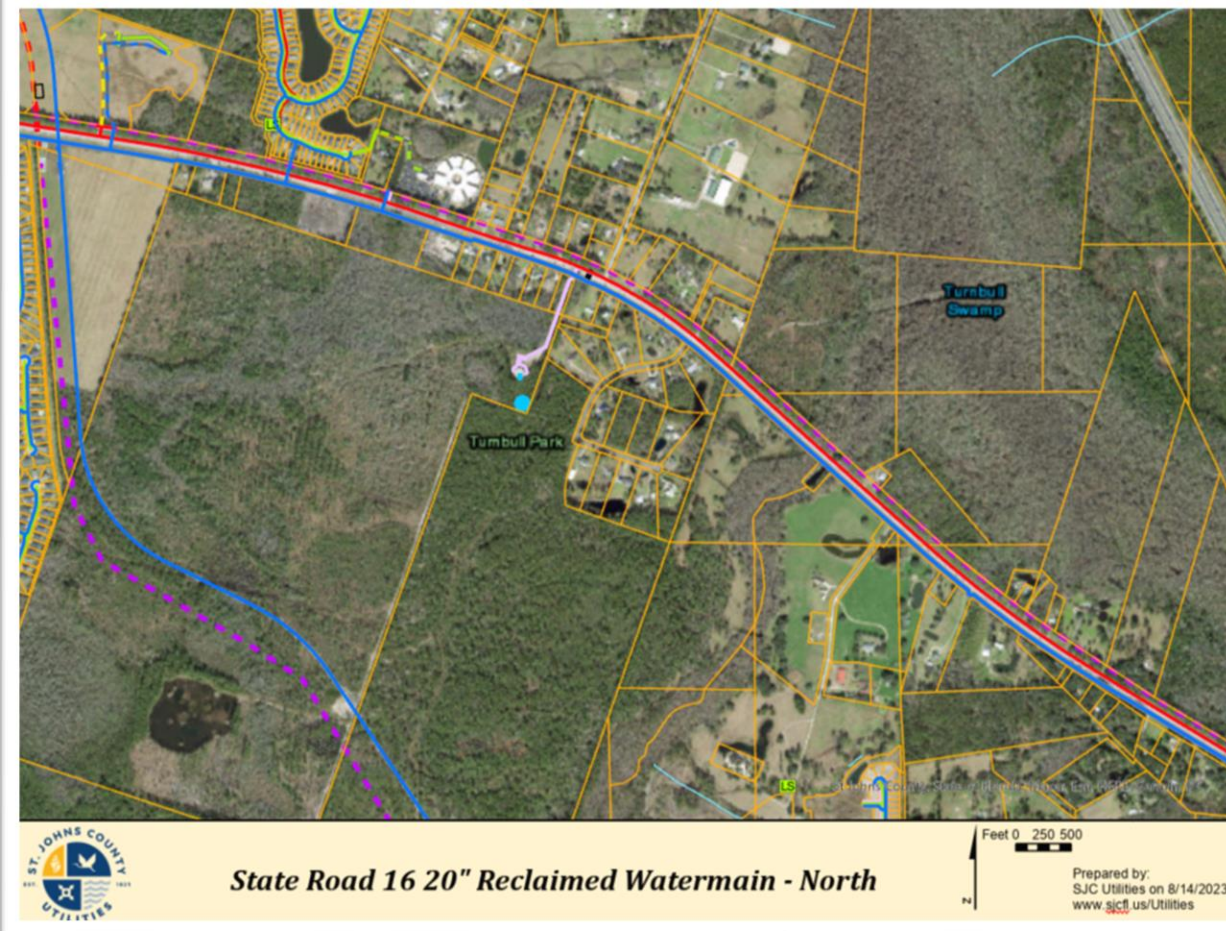
*George Miller Rd., SR207, and Morrison Rd.*



- $\pm$  11,000-LF of 12-inch PVC or 16-inch HDPE
- Bid date: Spring 2024.
- Open cut and trenchless crossings (including SR207)
- Currently in survey and design
- Budget Estimate: \$3.5M



# State Road 16 20" Reclaimed Watermain

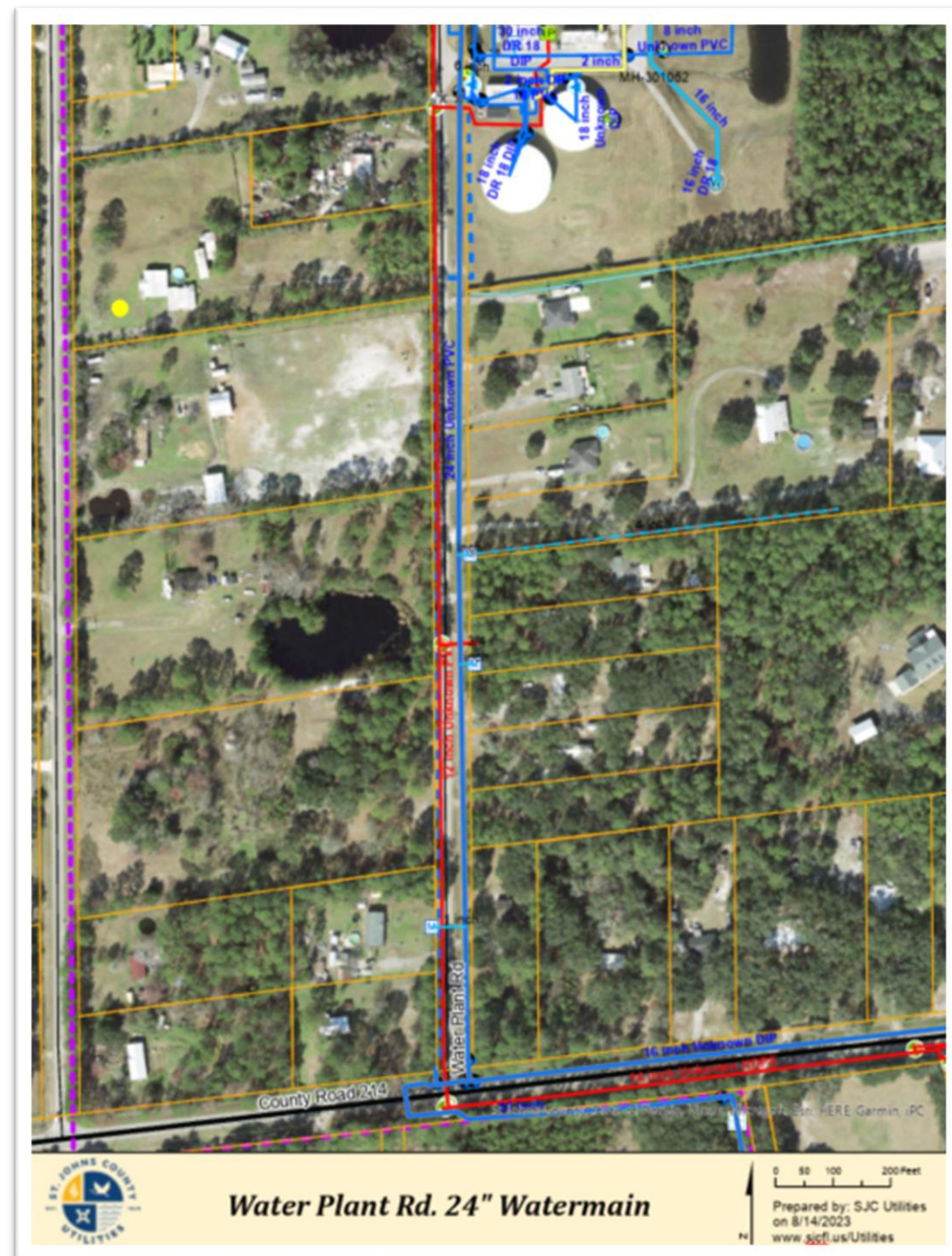


- $\pm$  25,000 LF of 20" RWM
  - In FDOT ROW-Needs clearing
- 12 ■ Budget Estimate: \$8M-\$10M



# Water Plant Road 24" Watermain

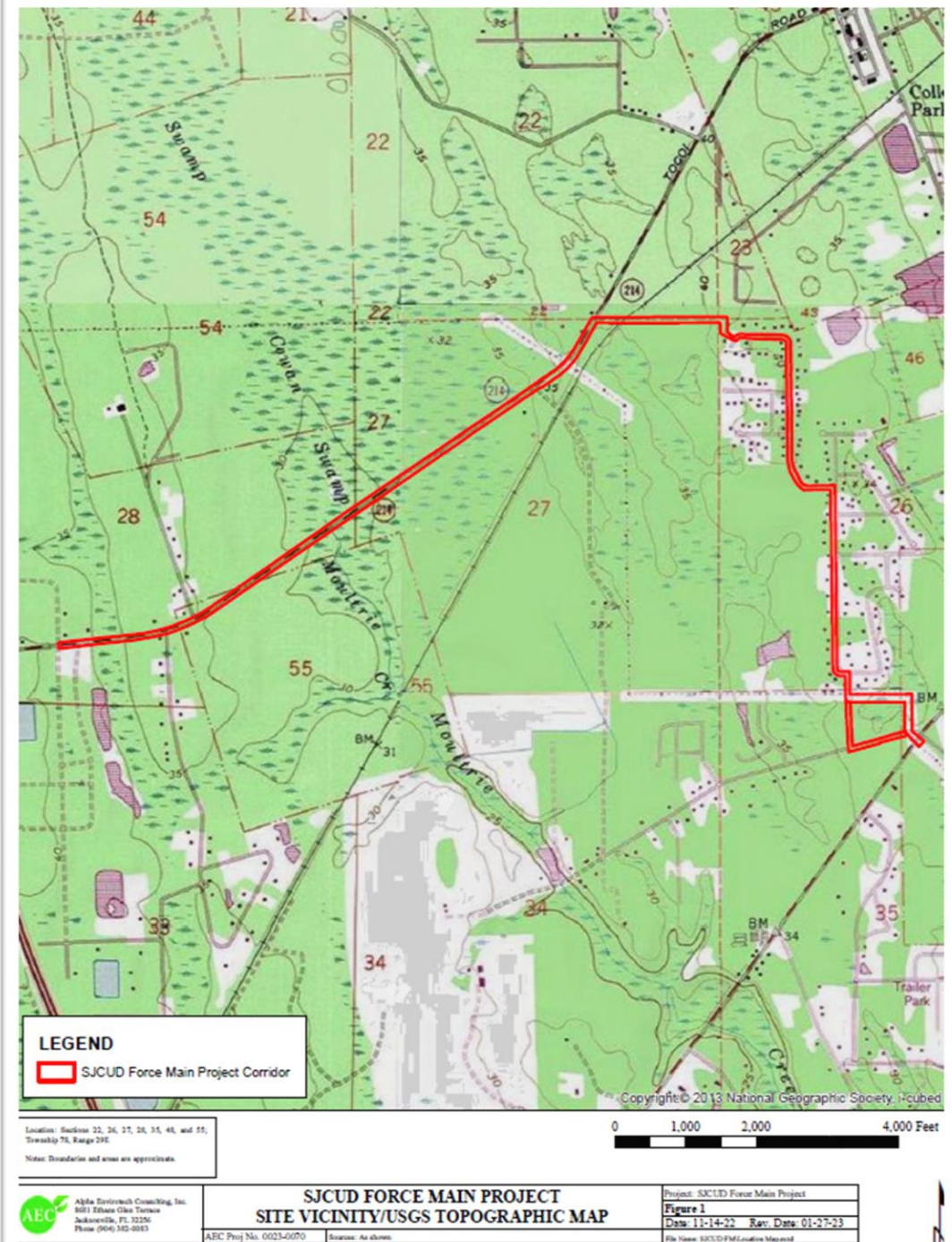
- 24" Parallel Watermain from CR214 to Water Plant
- +/- 1800 LF
- Budget Estimate: \$0.8M





# CR 214 Concentrate FM to SR 207

- ± 19,640 LF of 12" PVC and 14" HDPE
- Open Cut, trenchless, and J&B across FEC RR
- Expected to Advertise for bid within 30 days
- Budget Estimate: \$6.5M





# A1A Master Lift Station

- 3047 A1A S., St. Augustine, FL
- New Master PS -12' diameter wet well, electrical bldg., odor control, diesel bypass pump
- Expected Advertisement within 60 days
- Budget Estimate: \$2.5M

PIN 172390-0020; A1A South, St. Augustine

